

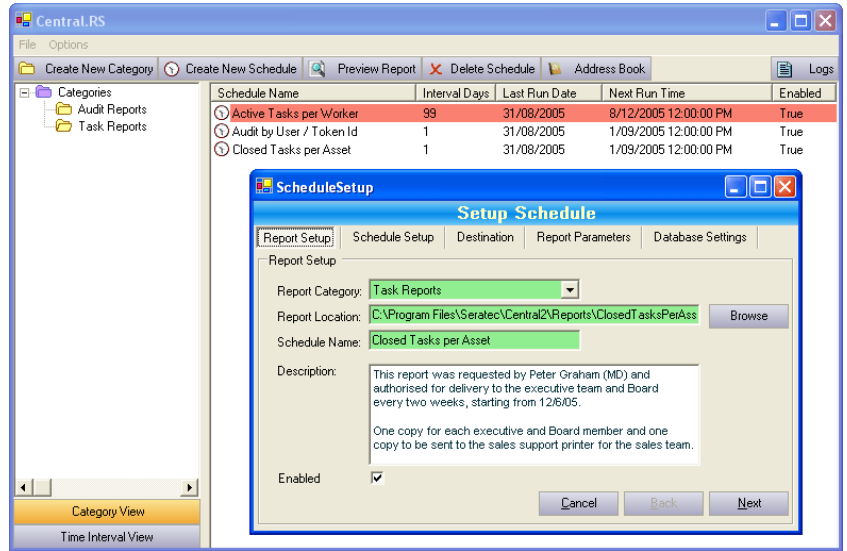
Feature overview

Automated "Crystal Reports" scheduler

Labour time is one of your organisations most valuable assets. And yet every day, week and month, your staff regularly waste time creating and disseminating the same reports they always produce. The good news is that there is an easy and affordable way to automate the production and dissemination of your regular reports. Automation will deliver immediate productivity and reliability benefits.

Central.RS is a truly affordable solution for your regular reporting needs. It eliminates the need to train your staff in the use of reporting tools, because it does the manual work for them. It harnesses the power and flexibility of Crystal Reports®.

With Central.RS, your staff will receive ALL their reports on-time, every time. You'll save 100% of the time otherwise wasted trying to navigate complex reporting systems. Our system is not only fast and easy to use, it will handles all your regular reporting needs.



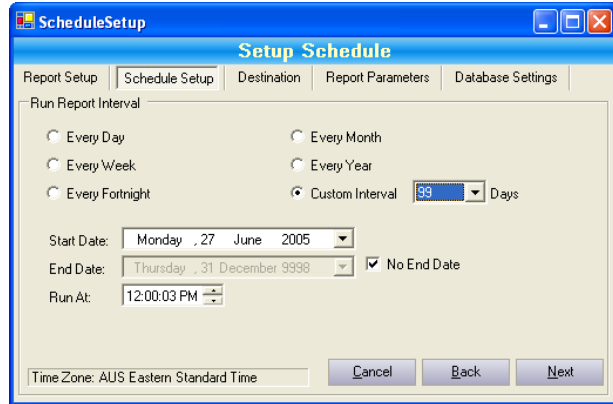
Schedule report regularity to suit your needs

Reports can be scheduled to be run at almost any frequency, such as daily, weekly, fortnightly, monthly, yearly or after a specific number of days between 1 and 365.

The date to start report dissemination can be forward scheduled, as can the last date to run, enabling full control over report delivery to selected recipients.

Each schedule can be named and annotated. You can optionally temporarily disable the automatic generation of any report without disturbing the report set-up, and can quickly and easily restore the automatic report creation anytime.

The simple license for Central.RS enables you to schedule and disseminate an unlimited number of reports to an unlimited number of destinations.



Send reports to multiple destinations

You can specify the destination list for each report, choosing between one or multiple emails, and/or one or multiple printers. In a matter of seconds, you can add or delete destinations or modify any report setting at any time as your needs require. The system logs all send attempts in a system log.

Send reports to printers

You can even print reports on any printer on your network, even across VPN's or wide area networks. You can set how many copies to print, so that there is one copy for every individual in that area if desired. You can name the destination printer any logical name to help you identify the destination.

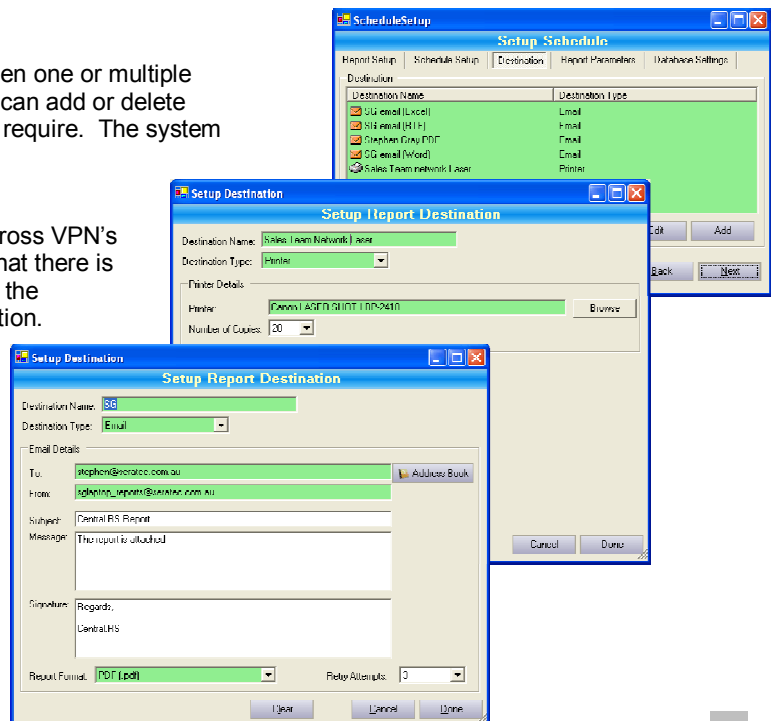
Send reports to email addresses

Many recipients internal or external of your organisation may prefer to receive their reports by email. You can preset for each email, the message and subject line to accompany the emailed report. You can even specify the format of the report itself.

Email formats

The report formats available include;

- Adobe Acrobat - .pdf
- Excel Spreadsheet - .xls
- MS Word - .doc
- Rich Text - .rtf



Continued

Input report parameters

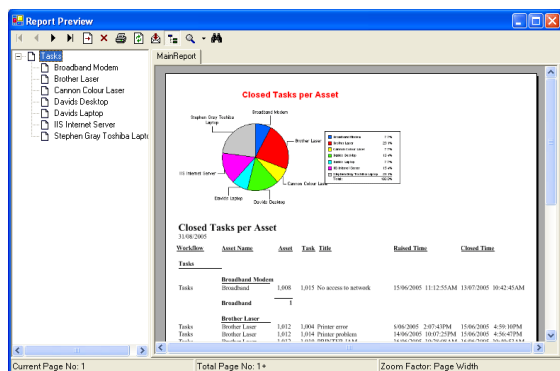
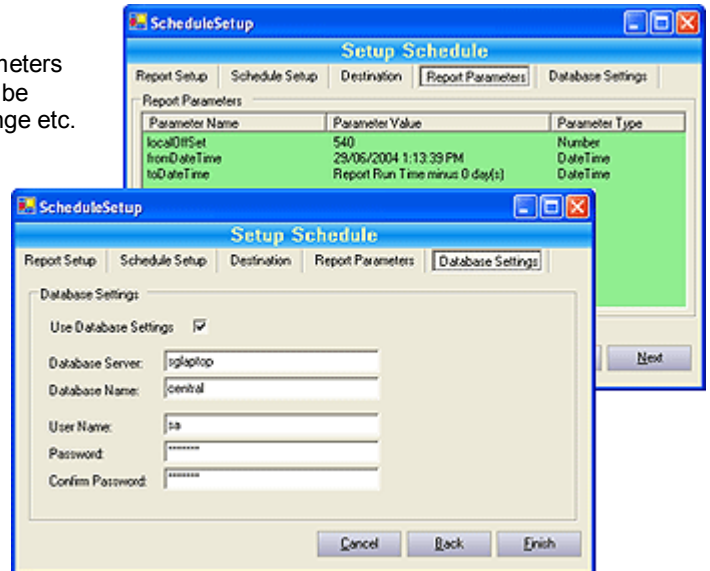
Typically, reports need to have parameters specified. These parameters enable automatic selection of the right data ranges and formats to be included in the report, such as reporting only on a specific date range etc.

The scheduler automatically detects parameters within a report and presents you with the opportunity to add the parameter detail at the time of setting up the report. With advice from the author of your reports, you can easily input the appropriate parameters for automatic use by the scheduler. Once set, there is generally no need to modify the parameters in the future, set and forget.

Database security

Database access detail is stored against each report. The database can reside on any authorised network location.

Naturally the access passwords are masked so that security is maintained. You can use the report scheduler to run Crystal Reports on just about any database application.



Preview reports

You can preview any of your scheduled reports by selecting the "preview" option at any time. The preview offers a range of powerful features to help you read and evaluate your reports, including the ability to visually zoom in, as well as drill down within the detail contained in the report. You can print and search, and even refresh the report content at the touch of a button.

Graphs and advanced layout options within reports

Reports can include not only statistical data in almost any logical layout that you desire, but can also include graphs and images. The graphs are dynamically generated each time the report is produced. Perfectly suited to Key Performance Indicator and Executive summary reports.

Familiar look and feel

Our report scheduler is designed to be so easy to use, that you will feel right at home using it from day one. It makes report scheduling a breeze and requires little or no technical knowledge to use.

Visually informative

On the main screen, your reports are grouped into logical categories that you can define and change. The schedule view shows when the report was last created and how often it is scheduled to run.

If a scheduled report has passed the "last date to run", then it is highlighted in red.

Tracking report delivery

The report scheduler keeps a full track of report creation and delivery so that you can see what causes there may be for non delivery such as email server failure and printer off-line or out of paper etc.

